



THE GREEN WAY

Annual Report 2024

OUR YEAR AT A GLANCE

For years The Greenway has been a fixture in Boston. A place to gather with friends and community members, to connect and share ideas, to pause amid the business of daily life. We're overjoyed that once more we've had the opportunity to contribute to the diversity of offerings for the public as we work to continually foster an inclusive and welcoming environment for our neighbors and visitors here on the park. This year, we've celebrated the diverse cultural heritage of Boston through myriad Public Art installments, hosted multicultural events with our neighbors, continued maintenance of the park to improve accessibility of pathways and beautify the space's gardens and lawns, and welcomed millions of visitors from across the globe to explore all that Boston has to offer. We look forward to continuing to foster a sense of community and inclusion in all that we do, and to sharing the vibrancy, beauty and energy of our city with all those who visit us in 2025!



200,000+

gallons of water were conserved during the month of May, as part of our "No Mow May" initiative



610

volunteers contributed to the beauty of The Greenway by donating **over 3,000 hours** of their time and hard work

8,100+

free rides were given out for the Greenway Carousel at Tiffany & Co. Foundation Grove



3,500

square feet of lawn was converted to a microclover-grass blend



5 new **Public Art installations** were added to the park

190+

free fitness classes on The Greenway brought community members together to celebrate wellbeing outdoors



LESS THAN 2%

how little downtime was seen across our **6 water features** thanks to the expert care of our maintenance team

58

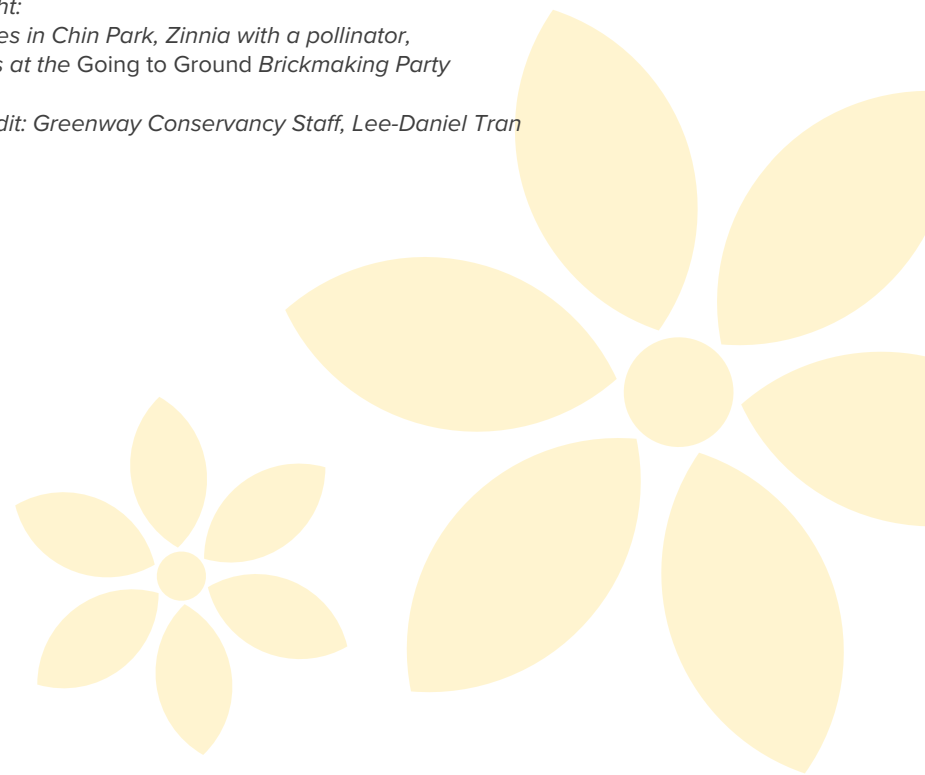
custom mixed colors were used on the new mural in Dewey Square





Left to Right:
Lion Dances in Chin Park, Zinnia with a pollinator,
Volunteers at the Going to Ground Brickmaking Party

Photo Credit: Greenway Conservancy Staff, Lee-Daniel Tran



Dear Friends,

2024 was a year of exciting firsts for the Rose Kennedy Greenway, and we are thrilled to have shared so many memorable milestones with our community!

One of the most significant highlights of the year was the unveiling of Jeffrey Gibson’s mural, your spirit whispering in my ear—a vibrant and inspiring addition to The Greenway, created by the first Indigenous artist featured in this space. This powerful work of art enriches the cultural fabric of our park while inviting reflection, dialogue, and connection. Over the past few months, the mural has sparked curiosity among visitors and challenged us all to consider the deep connections between our past and present.

Another powerful addition to our Public Art program came from LaRissa Rogers’s installation, Going to Ground, which serves as a striking visual reminder of The Greenway’s tangible connection to Black history in Boston. Through community-driven soil collection and brickmaking workshops, we were able to honor and illuminate this history in a deeply meaningful way.

Our commitment to bringing public art to the heart of Boston continued with the ARTBeat on The Greenway program, made possible through the generous support of the Greenway Business Improvement District (Greenway BID). Featuring five thought-provoking public art installations and more than 50 dynamic, interactive programs, this initiative allowed us to engage a broader and more diverse audience than ever before. These artistic and cultural experiences—along with the hundreds of other offerings available year-round—have had a significant positive impact on our surrounding neighborhoods, fostering both cultural enrichment and economic growth. Our Programs and Public Art teams continue to work together to strengthen the bonds that unite our Boston communities, ensuring The Greenway remains a vibrant, inclusive, and welcoming space for all.

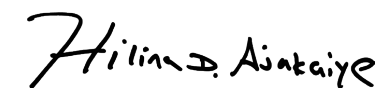
In 2024, we also celebrated the revitalization of Mary Soo Hoo Park, a transformation that enhances both the beauty and functionality of this beloved space. These thoughtful improvements increase accessibility and engagement, reinforcing our commitment to creating a park that serves the needs of all visitors.

Behind the scenes, our Horticulture, Rangers, Operations, and Maintenance teams worked tirelessly to ensure The Greenway remains as lush, vibrant, and well-maintained as ever. From stunning seasonal displays to creating a welcoming and safe environment, their dedication continues to elevate the park experience for all who visit. We are incredibly grateful for their hard work and passion.

As we look forward to 2025, we are excited for the many opportunities ahead! With more events, activations, and initiatives on the horizon, we will continue to build on the momentum of this past year. From live concerts and cultural festivals to sustainability efforts and innovative public art, we are committed to keeping The Greenway a dynamic, inspiring, and safe space for all.

Thank you for your continued support of the Rose Kennedy Greenway. Together, we will ensure this extraordinary urban oasis remains a place of joy, creativity, and connection for all who experience it.

With gratitude,



Hilina D. Ajakaiye
Chair of the Conservancy Board



Chris Cook
Executive Director



Conor Finley, Representative Aaron Michlewitz, Hilina Ajakaiye, Jess Hughes, Chris Cook, and Jerome Smith at the 2024 Gala on The Greenway
Photo Credit: Pierce Harmon



Caring for The Greenway

The several Conservancy teams that comprise our field staff work hard to sustain The Greenway's year-round beauty while also ensuring public safety and well-being. Our Maintenance and Capital Projects teams regularly perform needed repairs and maintenance to park infrastructure, providing carefully curated amenities like swings, fountains, and pathways for visitors to enjoy. Our Horticulture program beautifies the park with organic and sustainable practices, and our Park Rangers provide year-round support to park visitors and community members, rain or shine.



Right: Park Improvements in Mary Soo Hoo Park
Photo Credit: Chris Rucinski

Below: Hatchlings Winter Lights Display in Rowes Wharf
Photo Credit: Chris Rucinski

Maintenance Team members Thomas Gibbons and Tyler Hendrix installing equipment in the Wharf District
Photo Credit: Greenway Conservancy Staff



Maintenance & Capital Projects

The Maintenance and Capital Projects teams have had a busy year maintaining and improving infrastructure throughout The Greenway. Most notably, our teams conducted and supervised repairs and improvements in the park including repointing and resealing of joints in pavers for the fountains and walkways, painting the pergolas and railings in the North End, replacing the electrical main line to one of the parks in the Wharf District, and repairing and re-grading stone dust paths in the Fort Point Channel. They also completed the Mary Soo Hoo enhancements project by adding play structures, interactive musical chimes, safety surfacing, and additional seating and planting, elevating the park space for the enjoyment and comfort of families. They also had the opportunity to install a specialty HVAC louver system at Rings Fountain which will offer protection to the fountain's equipment room in the event of climate-change inundation. Another highlight for the Maintenance team this year included the opportunity to support the Public Art installation *Going To Ground*, by Larissa Rogers through the restoration of the grading and lawn area around the piece.

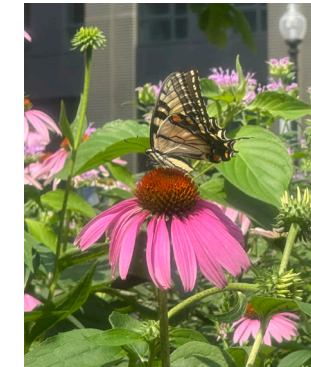
We are also delighted to report that thanks to close collaboration between the Maintenance and Capital Projects staff, we were able to execute the highest quality maintenance and operations of the Greenway Carousel at The Tiffany & Co. Foundation Grove. Our dedicated staff ensured that we had only one day of missed operations (due to a mechanical failure), and we had less than 2% of downtime combined across all six water features. Finally, to close out the winter months, we were overjoyed to once again welcome *Hatchlings*, our popular Winter Lights installation, back to The Greenway.

Left hand Page, Left to Right: Going to Ground installation by LaRissa Rogers, Daylilies in Dewey Square, aerial view of the Greenway Carousel. Volunteers pruning in the North End

Photo Credits: Chris Rucinski, Greenway Conservancy Staff, Julian Damiani, Anthony Crisafulli

Horticulture

The Horticulture Department continues to enhance The Greenway’s gardens and landscapes using sustainable practices. As a leader in ecological horticulture, our innovative management and maintenance practices protect not only the environment but our park visitors too. The plants we care for create a beautiful public space for our community to enjoy, increase biodiversity throughout the park, and help to build climate resilience in Downtown Boston.



Left to Right: 2024 Greenway Horticulture Team, Horticulturalists Sam Trulli and Teresa Fejoo presenting to Volunteers in the Greenway Meadow, CitySprouts exploring the gardens in Dewey Square, 2024 Greenway Horticulture Team, Soft Landing plantings, Eastern Tiger Swallowtail, Sam Trulli pruning shrubs during winter
Photo Credits: Greenway Conservancy Staff, Anthony Crisafulli

To support our sustainability goals in 2024, our Horticulture team made the change from fuel to battery-operated equipment to reduce our reliance on fossil fuels. They also removed the lawn at the bases of our oak trees and replaced it with herbaceous perennials to create a “soft landing.” A soft landing provides habitat and food for caterpillars which will mature into native butterflies and moths. This past year, they also converted approximately 3,500 square feet of lawn near Dewey Square to a microclover/grass blend in which the clover produces usable nitrogen that feeds the grass within the turf. This lawn alternative requires less water and mowing once established, further supporting our sustainability goals. In addition, they installed more native plants throughout the park, including dogwoods and *Viburnum* species, which are known for supporting our local bird population by providing a food source throughout the winter months. Our organic maintenance practices further protect our feathered friends, and support biodiversity by ensuring no animals are exposed to dangerous chemicals while feeding on plants and insects along The Greenway.



Top & Right: Rangers Jillian and Matt interacting with public at events and in the park.

Left: Jillian Bannon, Senior Park Ranger and Matt Cordeiro, Park Ranger.

Photo Credit: G. Ortiz, Anthony Crisafulli, and Greenway Conservancy Staff



Rangers

Throughout the year, our privately funded Park Rangers provided trusted security and professional ambassadorship on The Greenway. In addition to their daily duties, the Rangers also provided immense value to our Conservancy staff through trainings for NARCAN use, guest services, and public safety for Conservancy staff. Our Park Rangers also hosted their first successful donation drive to help the unsheltered population of Downtown Boston which allowed for the collection of gift cards, handwarmers, gloves, and other cold-weather clothes, and the distribution of those donations directly to those in need. The Greenway Park Rangers also continued to partner with a local security company, which provided an additional layer of increased safety through overnight unarmed patrols of The Greenway.

“Working as a Park Ranger at The Greenway has been a dynamic and fulfilling experience for me. Fostering a community of people that share similar views on the importance of urban parks has been so inspiring. It's not just a job to me but a chance to make a lasting impact on the community that I love, whether its being involved in important community meetings, making sure people that are in need are heard and cared for, or educating the public and my colleagues about their safety is a really rewarding experience I wouldn't trade the world for.”

– Jillian Bannon, Senior Park Ranger

Volunteers

We are so happy to share that the Greenway Conservancy continued to offer a variety of volunteer opportunities to local organizations, corporate and community groups, and individuals throughout 2024. Volunteer projects not only supported our park stewardship, horticulture, and maintenance initiatives, but also provided hands-on learning to participants. Over the course of the year, 610 individual volunteers contributed over 3,000 hours, providing essential assistance to Conservancy staff. On the strength of reviews from volunteers, the Conservancy has won the “Top Rated Award” from GreatNonProfits.org for fourteen years running. Thanks to the many stories shared about our Volunteer Programs, the Conservancy has the opportunity to increase the public’s awareness and understanding of sustainable gardening practices and park operations, and how they benefit our community at large.



Volunteers and Greenway Conservancy staff maintaining the park and participating at Conservancy Events.

Photo Credits: Anthony Crisafulli, Pierce Harmon, Greenway Conservancy Staff

“The Conservancy is fortunate to have a dedicated community of new and returning volunteers year after year. It is a pleasure to work alongside volunteers eager to contribute to our mission and the beauty of the park!”

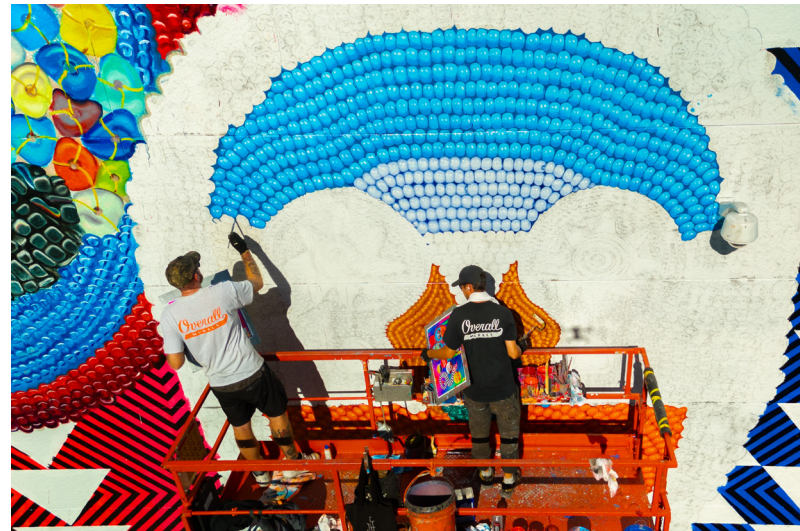
– Avery Morgan, Volunteer Manager



Public Art

Through site-specific art commissions that are closely tied to the land that is now The Greenway, the Conservancy is committed to amplifying non-dominant stories that resonate with all of our visitors.

The Greenway Conservancy's Public Art Program commissions temporary exhibitions of artwork that engage people in meaningful experiences and dialogue with art, each other, and the most pressing issues of our time. We provide artists unique opportunities to exhibit bold, new work that considers the possibilities of 21st century Boston in ways that engage, reflect and inspire the city's diverse communities.



Left: Jeffrey Gibson speaking at the mural opening event
Photo Credit: Osemwenkhae Studios

Right: Overall Murals painting the Dewey Square Mural
Photo Credit: G. Ortiz

Left: Drag artists and performers at the mural opening event
Photo Credit: Osemwenkhae Studios



Jeffrey Gibson:
your spirit whispering in my ear, 2024

Following his time representing the United States at the 2024 Venice Biennale, artist Jeffrey Gibson became the tenth artist to be featured as part of the rotating Dewey Square mural program with the installation of *your spirit whispering in my ear* through a collaboration with MASS MoCA. We celebrated Gibson's work, the first created for our mural program by an Indigenous artist, in September with a public opening featuring performances by local drag artists and co-curated with the Boston LGBTQ+ Museum and Native American Indian Center of Boston.

**Ponnapa Prakkamakul:
Year of the Dragon, 2024**

Year of the Dragon takes the form of a vibrant interactive dragon sculpture, named Ju-Long Ju-Long, who invites viewers to climb, imagine, and play. Co-created through a community engaged process, Year of the Dragon incorporates elements directly from the perspective of Chinatown youth and elders via public workshops.



Year of the Dragon by Ponnapa Prakkamakul, 2024.
Photo Credit: Lee-Daniel Tran

**Lani Asunción:
SONG/LAND/SEA: Wai Water Warning and Binakol Blessing, 2024**

Part sculpture, vinyl, and banner installation, this project from artist Lani Asunción responds to the effects of climate change and global warming on Boston's coastline. The opening event included a traditional mele by Iwalani Kaluhiokalani, experimental live music, and a cleansing water-pouring ritual. The collaborative effort to create this artwork taught us about the community network necessary to live and survive in a changing world.



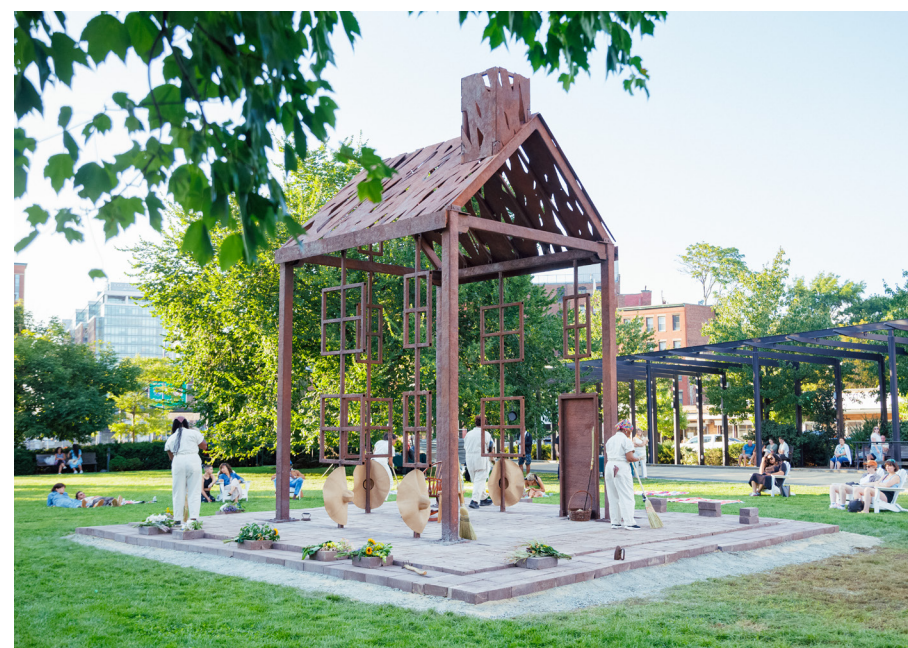
SONG/LAND/SEA: Wai Water Warning and Binakol Blessing by Lani Asuncion, 2024.
Photo Credit: Mel Taing

Far Away, From Home by Zhidong Zhang, 2024.
Photo Credit: Lee-Daniel Tran



**Zhidong Zhang:
Far Away, From Home, 2024**

Reinterpreting a curio cabinet reminiscent of furniture from the artist's childhood home in Hunan, China, the sculpture is an inquiry into the complexities of home, immigration, identity politics, diaspora, and queerness in the public sphere.



**LaRissa Rogers:
Going to Ground, 2024**

Honoring the life and legacy of Zipporah Potter Atkins, the first Black woman in Boston to purchase and own a home, this work stands on the historical site of Potter Atkins' home. It was built using samples collected from an *Open Call for Soil*, which included over 50 submissions of soil from 12 states, 4 countries, and 3 continents.



Going to Ground by LaRissa Rogers, 2024.
Photo Credit: Alex Joachim

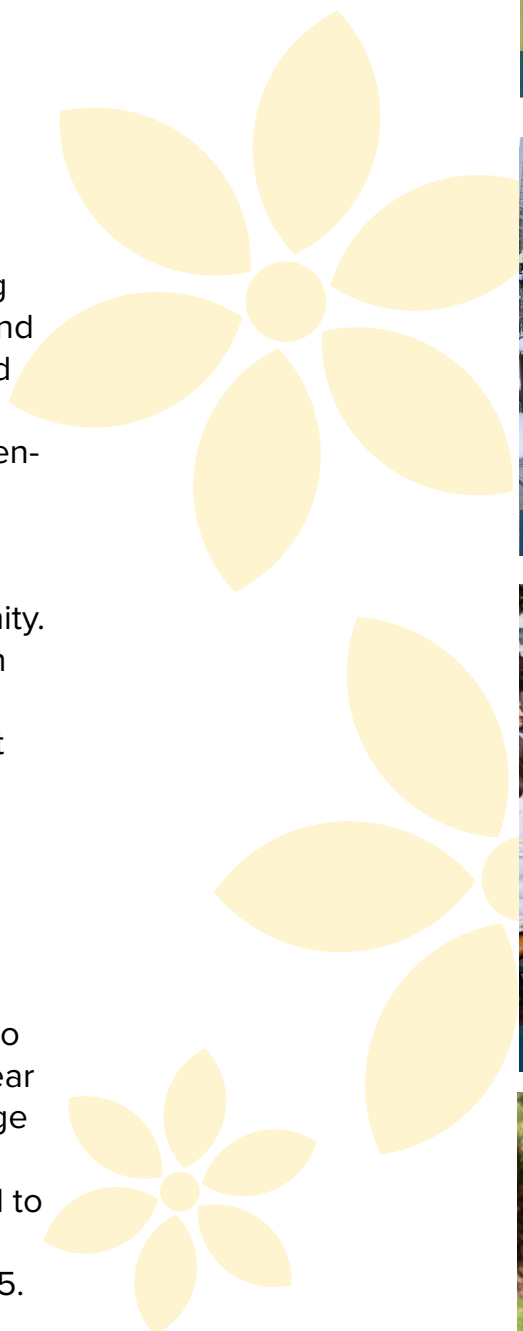
Programs & Outreach

The Programs Department supported and hosted more than 400 free events on The Greenway in 2024, including markets, fitness classes, movies, performances, and new Conservancy-produced events like our Fitness Fair and Fall Fright Movie Nights.

Consistent with the Conservancy's commitment to supporting local entrepreneurs, The Greenway served as an incubator and platform for more than 100 small businesses through our food truck program, fitness series, beer gardens, and artisan markets. The majority of these businesses identified as women- or minority-owned.

Throughout this past year, the Greenway Conservancy also continued its deep engagement with the Chinatown community. In addition to the Conservancy's weekly play sessions in Chin Park, our programmatic partners brought a wide range of activities to the park, such as family-friendly play sessions, art and cultural festivals, outdoor movie screenings, farmers markets, and music performances, keeping the park bustling and vibrant all season long.

This year has been one of expansion: the Programs Department continues to see a demand for a wide variety of events, which has resulted in a longer programming season to better serve the needs of our community. 2024 was also a year of firsts, as we brought the first outdoor sauna and cold plunge experience to the city earlier this year, and hosted a Winter Warmer on the Winter Solstice in December. We look forward to growing our audience and bringing even more visitors to the park with engaging, diverse, and captivating offerings in 2025.



*Photo Credits: Nicole Marie,
Lee-Daniel Tran, G. Ortiz,
Greenway Conservancy Staff*



Workout with The Greenway Fair



Fall Fright Movie Nights



Winter Warmer



Greenway Carousel



Chinatown Main Street



Trillium Beer Garden



Food Truck Program



Spring Food Truck Festival

Donors & Supporters

The Conservancy gratefully acknowledges those whose gifts, pledges, and in-kind services have helped sustain our work between January 1 - December 31, 2024.

\$100,000+

Barr Foundation**
 City of Boston
 City of Boston Community Preservation Act
 Greenway Business Improvement District
 Mass DOT
 Meet Boston
 Richard K. Lubin Family Foundation
 Wagner Foundation

Hines Interests, LP
 Kirsten Hoffman*
 Barbara and Amos Hostetter*
 Kahn Charitable Foundation*
 Rebecca A. Lee*
 Loomis, Sayles & Company, LP
 Sal Lupoli
 Massachusetts Cultural Council
 MFS Investment Management

\$25,000-99,999

Amazon
 Beacon Hill Garden Club
 Blue Cross Blue Shield of Massachusetts
 Boston Redevelopment Authority
 Citizens
 George B. Henderson Foundation

National Endowment for the Arts (NEA)
 National Grid
 Princeton High Meadows
 Tishman Speyer

\$10,000-24,999

Anonymous*
 Jon and Barbara Basalone*

Beacon Capital Partners
 Berkeley Investments, Inc.
 BlackRock
 The Boston Foundation
 Boston University
 Brookline Bank
 The Coca-Cola Company
 Matt Conti*
 Coverys
 Deborah Munroe Noonan Memorial Research Fund
 Elia & Fannie Karas Foundation, Inc.
 Eversource
 Oliver and Negin Ewald*
 Faneuil Hall Marketplace
 Fidelity Investments
 William J. and Kathleen M. Fitzgerald
 Stephen and Betty Gannon
 Gazit Horizons
 Gilbane Building Company

Harvard University
 Highland Street Foundation
 Karen and Bruce Johnson
 The Lynch Foundation
 M&T Charitable Foundation
 Mayor's Office of Arts and Culture and the City of Boston
 New England Aquarium
 New England Foundation for the Arts (NEFA)
 Oxford Properties Group
 Jane and Neil Pappalardo*
 Pembroke
 The Plymouth Rock Assurance Foundation
 Related Beal
 John and Phirin Shea*
 Bradley Snyder*
 State Street Corporation
 Suffolk Construction
 TD Charitable Foundation
 Vanasse Hangen Brustlin, Inc. (VHB)
 Janet Veasey and Robert Binney*
 Vineyard Offshore
 WS Development Associates LLC

\$5,000-9,999

Anonymous*
 Asian Community Development Corporation
 Baiwan Fund I*
 Bartlett Tree Experts
 Berkshire Bank
 Block By Block
 Boger Family Foundation
 Christine and Joe Boncore
 BXP
 Julie and Kevin Callaghan*
 Canopy by Hilton
 Boston Downtown
 Helen Chin Schlichte
 Chiofaro Co./ International Place/ Harbor Garage
 Dwight and Helene Churchill*
 Comcast
 The Davis Companies
 Dempsey Associates
 Dewey Square Group
 Dot Joyce, Joyce Strategies LLC
 The Druker Company, Ltd.
 Fiduciary Trust Company
 Conor Finley
 Robert and Doris Gordon*
 Rosalind Gorin and Matthew Budd

Goulston & Storrs
 Holland America
 Jessica Hughes*
 Doug Husid*
 The HYM Investment Group
 Insperity LLC
 IQHQ
 JLL
 Deniz and Scott Johnson
 Elizabeth L. Johnson*
 Keegan Werlin LLP
 Martignetti Construction
 Martin J. Walsh Committee
 Martin Richard Foundation
 Massachusetts Convention Center Authority
 Mayor's Office of Economic Opportunity and Inclusion's Office of Nightlife Economy
 Mintz
 National Development
 New England Development
 Nutter
 Park Street Strategies
 Roger and Hannelore Reiser*
 Bud and Margaret Ris
 The RMR Group
 Jay and Laurie Roche
 Patrick and Kristen Ryan

*Denotes members of the Greenway Circles, a group of generous individuals whose unrestricted operating support provides a strong foundation for the work of the Conservancy.

**Denotes gifts that are part of multi-year grants or pledges

Samuels & Associates
Serlin Haley LLP
Seven Hills Pasta Co.
Shawmut Design and
Construction
Stoss Landscape Urbanism
Susanne A. Lavoie
Synergy
Verizon
Vicinity
Volo Sports
Sheila Willard*

\$2,500-4,999

Boston Harbor Women of
Color Coalition
Briar Group
Cell Signaling Technology
Coofandy
Mary Beth Curtis*
JoAnne Dickinson and John
Dickinson-Eaton*
enviENERGY Studio
Greater Boston Chamber of
Commerce, Inc.
Joanne Hayes-Rines*
Kimi Iguchi and Paul
Gormley*
Income Research and
Management

Liberty Square Group
Larry Moulter and
Pamela Frechette
Tony and Kitty Pell*
Puttshack
Rasky Partners
Rubin and Rudman LLP
Allison Ryder and David
Jones*
Sayed and Maggie Saleh*
Tufts University
Raimund and Anne
Vanderweil*

\$1,500-2,499

Gee How Oak
Tin Association
Laura and Neil Cronin*
Trudi and Robert Fondren*
Ray and Joan Green*
Jenny Harding*
Debbie Johnston*
Lebowitz-Aberly
Family Foundation*
Northeastern University
Linda See and Ryan Powers
Teil Silverstein and
Jason Purdy*
Cynthia Soo Hoo
Town Fair Tire
Foundation, Inc.

\$1,000-1,499

A.D. Makepeace
Alexander, Aronson,
Finning & Co., P.C.
A&O Shearman
Arthur J. Gallagher & Co.
Arts Connect International
Michael Bonetti
Frank and Anastasia
Catrickes
Christopher Cook and
Aine Ní Cheallaigh Cook
Alison Coolidge
Claire Corcoran and
William Murphy
Daniel Daglio
The Dagny Boston
Denterlein
Teresa and James Dore
Kathy and Mike Dunford
Marc and Judy Ehrlich
Elkus Manfredi Architects
Barry and Odile Fidelman
FTI Consulting
Greenberg Traurig, LLP
Pierce Haley
Sarah Hancock
HarbourVest Partners
InterSystems Corporation
Karen and Connor Kriegel

John and Wendy Larivee
Lawrence & Lillian Solomon
Foundation
Eugene and Janet Leone
Wendi and Robert Lohmar
Sharon and Brad Malt
Alan Maltzman and Eileen
Trebbin
Marcus Partners
Robert McCarron
Meet Atlantic City
MILL5
Morgan Stanley Eaton Vance
Investment Management
Brian A. O'Connell and
Laura M. Connors
Vanessa Parks
Jim and Danielle Schley
Kimberly Sherman Stamler
Vikki Spruill
Ashley Stolba

\$500-999

Autodesk
Michael Axiak and Yalu Wu
Maria and John Bartlett
BLN Prime,
LLC/Prime Shoppe
Breckinridge Capital
Advisors
Thomas and Lisa Brothers

Michael and Joan Carragher
Davida Carvin
Meaghan Connors
Cathy and Harvey Cotton
Sean Curran
Dain Torpy
James Dolan
EQ Office
Finegold Alexander
Architects Inc.
Martin and Kathleen Fogle
Christi Fried
Kathryn Friedman
Niyum Gandhi
Kate Gilbert and
Chris Colbert
Meredith and Bill Gisness
Liz Goodfellow Zagoroff
Goodwin Procter LLP
Green Associates, LLC
Marjorie Greville
The Institute for Applied
Network Security (IANS)
Martha Jones and
Christine Armstrong
Thomas Kershaw
Keville Enterprises, Inc.
Peter Kochansky and
Lauren Dias
Holly Laurent

Adam Lutynski
John Manning and
Catherine Leser
Virginia Mayer
Stan McGee and John Finley
Kathleen Meany
Robert and Joanne Paone
Plymouth Rock Assurance
Corporation
Prince Lobel Tye LLP
Diego Rosenfeld
Richard Rundell
State Street Foundation, Inc.
Charles Steenburg
Janet Tiampo and
David Parker
Weber Shandwick
Weil, Gotshal & Manges, LLP
Westminster Barrington
Foundation
Whale Rock Capital
Management
Katherine Whidden
Peter A. Zalewski
William Zielinski

\$100-499

Angela Albanese
Dhaha Alrabiah
Julie and Lee Andrade

**Denotes members of the Greenway Circles, a group of generous individuals whose unrestricted operating support provides a strong foundation for the work of the Conservancy.*

***Denotes gifts that are part of multi-year grants or pledges*

| | | | | | |
|---|-------------------------------------|-------------------------------|-------------------------------------|--------------------------------------|---------------------------------------|
| Anonymous (6) | Valerie Burns | Naiwei Dong | Allen Hankins | Gregory Kerwood | Robert Maloof |
| Katharine Armstrong | Kate Carignan | Michael Donovan | Darrel and Mary Harmer | Charles and Carla Kim | Sandra Manzella and Richard Karoff |
| Luz Arregoces | Arthur and Lennie Carver | Nancy Drinkwater | Marrk Harris | Patrick King | Eve Marder |
| Gail Badalamenti | Adam Castiglioni | Melanie and David Dyer | Per-Olof and Ann Hasselgren | Meghan Klaric | Madeline McGee-Cochran |
| Elizabeth Baker and Robert Abbe | Aleksandar Cerne | EarthShare | Lisa Hausmann | Patricia Knight | Barbara McKenna |
| Carol Ball and James Re | Judith Chaffee | Westy and Susan Egmont | Connie Henderson | Irene Kochevar | Lynne Menzie |
| Jonas Barciauskas | Indy Chamber | Paul and Lisa Eisenberg | William Henry | Lindsey Krenzel | Diana Meservey |
| Kimberley Beaudet | Benjamin Clark | Charbel Elberry | Laurie Hergrueter | Blair Kreppein | Don and Pamela Michaelis |
| Robert Beazley and Kristen Struebing-Beazley | Nimmi Cleve | Epsilon Associates, Inc | Mary Hewlett | Madelyn Kurz | Julie Miller and Paul Dansereau |
| Sally Beecher and Harold Moren | Michael Collins | Martha Erickson | John Higgins | Katharine and Tom Kush | Britt Miller |
| Donna and Thomas Belmonte | Nichola and John Collins | Linda Fariole | Erica Hirshler | Abigail LaFontan | Sharon Miller |
| Mary Bennett | Thomas Cook | Marie Farrell | Caroline Holland | Alex Landon | Richard and Deborah Minns |
| Joseph and Marilyn Benoit | Peter and Patricia Cooper | Eileen T. Fay | Gillian Holt | Martha Laposata | Kyra Montagu |
| Susann Benoit | William Cornell | Jeffrey and Jerri-anne Finley | Robert Hoyt and Mary King | Richard and Linda Lawler | Tori Montemurro |
| Jane and Jerry Berman | Lee Costello | Deborah Flynn | Jill Hyde | Eliza Leahy | Mayo and Daniel Morgan |
| Barry Berman and Laura Gold | Greg Cox | Petra Flynn | Catherine Iacobo | Hong Le-Bruno | Haley Morgan |
| Judy Bernstein | Carly Craig | Douglas Foy | Mark Iafrazi | Timothy Leland and Julie Hatfield | Midori Morikawa |
| Lisa Bevilaqua | Linda and James Cravens | Norm and Amy Fracassa | John and Marcia Imbrescia | Mary Kay Leonard | Andrey and Lisa Mykyta |
| Garen Bohlin | Leslie Creedy and William Powers | Sarah Freeman | Judson Jacobs | Jack Liu | A. Lindsay Neagle |
| Kermit and Isabel Borland | Lenore and Jon Cummings | Trina Fritsch | Thomas and Maryann Jalkut | Christopher Loh | Phillip Nelson and Emily Hyle |
| Nicole Bracco | David Dalena and Brian Patton | Cathryn and James Gannon | Ellen Janos | Greg Lucyniak | Peter and Beatrice Nessen |
| Thomas and Ann Brazier | T. Edmund Daly | Cathleen Garman | Margaret and Elliott Jemison | Sarah Luick | Antony Nguyen |
| Helene and David Brodette | Amy De Genaro | Alan Gates | Joyce Jones | Margaret Lynch | Margaret and Richard Novak |
| Myra and Larry Brodney | Dennis and Diane Delaney | Patrick and Janice Glynn | Roger Joseph and Patricia Palmer | Ann MacFate | Lawrence and Helen O'Connor |
| Kenneth and Sarina Bronfin | Addison Dennard | Paula Gold | James M. Kalustian | Mary and David MacKenzie | John and Joanne O'Donnell |
| Myles Brown and Judy Garber | Thomas and Evelyn DeRosa | Tim Goldner | Marlene Kaplan | Deborah and James MacPhee | Brooke Paige |
| Lewis Burleigh | Paul and Helen Dewey | Louis and Phebe Goodman | John Keady | Joren Madsen and Lynn Wiatrowski | Bryce Palmer |
| Jeanne Burlingame | Jane Diamond | Bob and Judy Gore | David Kelleher | Arturas Malinauskas | Jane Papa |
| | John and Sally Dias | Nat and Jodi Gorton | Cynthia Kelly | Georgette Maloof | Carol Parker Bogard |
| | Katherine Donahue | Donna Grady | Janet Kemp | | |
| | Bettyna Donelson | Miles Grant | Mary Kensinger | | |
| | | Wendy Hamilton | | | |
| | | Margot and Peter Hanford | | | |

| | | | | | |
|--|---------------------------------|--|------------------------------------|-------------------------------------|---|
| John Parson | Gretchen Sharfman | Barbara Wiedenman | Donna Cohen | Lyanh Harding | Norman and Arlene Meisner |
| Susan Passoni | Sarah Shaughnessy | Jasmine Wilder | Jesus Colon | The Hartford | Laura Melle |
| Henry Paulus | Mary Jean Shultz | Dorothy and Richard Willey | Joseph Connolly | Sean Hennessey | Marissa Merdinger |
| Luca Pellegrini | Caroline Sloan | Amy Wixon | Jona Cumani | Samantha Howe | Carrie Mermelstein |
| Elisabeth Peterson | Mark Snyderman | Ryan Woods | Betsy and Stephen Davis | Judith Hurley | Margaret Michaud |
| Vanan Phan | Helene Solomon | Thomas Wycheck | Michelle Despres | John Iappini and Carole Mathieson | Joan Mikula |
| Janice Philpot | Huang Sonya | Michael Zielinski | Michael Devine | Teresa Jacobson | Harold and Mark Miller |
| Kelsey Pickering | Marie St. Fleur | | Anne Disarcina and Beth Jakubowski | Dawn Johnson | Susan Moberg |
| Richard and Sharon Polisson | Kerry Stanton | \$1-99 | Celina Doucette | Richard Johnston | Daniel Morris |
| Larry and Valerie Post | Robert and Joan Stein | Sarah Abdelrahim | Joanne Ekhaml and James Gorman | Mary and Daniel Jones | Rachel Moulton |
| John Pregmon | Patricia and Wesley Stimpson | Shubham Aggarwal | Todd and Susan Elmore | Colin Keane | Kristoff Nelson |
| Zoya Puri | Sigourney Street | Anonymous (7) | John Faricelli | Melanie and Matt Kelly | Liz Nelson Weaver |
| Ethan Rabin | Prita Subramanian | Lamar Auguste | Florence and John Faro | Katelyn Kerins | Carolyn and George Parsons |
| Matthew and Linda Ramsden | Nancy Sullivan | Mariah Baer | Angela Ferrari | Shann Kerner | David Paskind |
| Marie Rausch | Carolyn Tait | Sandra and David Baird | Devin Fitzgerald | Stuart Kolodner and Deborah Simonds | Loumona Petroff |
| David Resmini | Ethan Taylor | Caitline Barber | Brendan Fortin | Joseph Konopka | Margaret Phan |
| Peggy Richardson | Brian Taylor | Joel Benjamin | Maryanna and Charles Foskett | Noah Kortkamp | Carol and Gary Phillips |
| Mary Rivet | Laura Thegenus | Rachel Bishop Campbell | Michael Francalangia | Claire Kozower | Vidya Raju |
| David and Barbara Roberts | Daniel and Virginia Thurler | Lindsey Bleimes | GE Foundation | Micah Kraus | Ursula and Gordon Riblet |
| Mary Robinson | John Trydahl | Rosemarie Boardman | Robert Gentile | Randi Lathrop | Margaret Richardson |
| Raquel Rodriguez and Christopher Lynch | Li Jun Tsai | Jessica Botero | Pamela Gerrol | Cesar Llanos | Andrew Robinson |
| John Romano | Annick Van den Abbeelee | Michelle Botero Rua | Robert Goisman and Jeanne Traxler | Patricia Lombard | Terry Rockefeller and J. William Harris |
| Marilyn and Mitchel Ross | Janet Van Liere | Dennis Brady and James Souza | Allen Goldberg | Elaine Lyte | Alex Rogers Pittman and Robert Pittman |
| Jacqueline Royer | Rachel Walters | Robert and Carol Brandon | John Gray | Sarah Mansbach | Patricia Romeo-Gilbert |
| Frederick and Mary Salvucci | Henry Warren and Cornelia Brown | Fabiana Bueno | Great-West Financial | Alice Marbach | Heidi Rosenfeld |
| Lydia Sampson | Karen and David Weinberg | Madeeha Channah | Remo and Silva Guastucci | Karen and Edmund Marcarelli | Joan Rowland |
| Steven Santoro and Lidia Vitiello | Robin Weinberger | Lilly Chen | David Hahesy | Charles and Dorothy Marcella | Andrew Royer |
| Michael Schiano | Stephen and Bette Weinberger | Daniel Chen | Monica Halas | Elaine McCleaf | Jonathan Saunders |
| Arnold Schlegel | Jared Whittier | Janie Chickering | Laury Hammel | Jaye Meakem | Cheryl Schatzman |
| Stephen Senna | Wicked Fun Consulting | Charlene Chow | | | Melissa Shattuck |
| David Share | | Lindsey Cimochofski and Bradley Ruffleth | | | Joy Silverstein |

Naomi Skoler
Neil Smith
Mary Stack
Jean Stewart
Kevin and Catherine Synnott
Daniela Tello Lujan
Cecilia Thompson
Helen Todisco
Angelica Torres
Mary Udeani
Caitlin Vanderberg
John and Beverly Wand
Lynn Wentzel
Cricket Weston and David Molinaro
Haley Wicks
Jim and Margery Wieder
Sherri Williams
Termel Wolfe
Jodi Wolin
Jenna Woods
G. Elizabeth Wylde and Lance Drane
Jordan Zimmermann

In Honor Of

Kin Chu
Christopher Cook (2)
Coppertone
David Dalena
Phyllis Donelson
Beth Ellen Foley
Greenway Staff

Gertrude Carman Grohe
Audrey Lopez
Megan Ratkey
Cathy Weston

In Memory Of

Catherine Hooban Bennett
Maria Coli (2)
Dave Flynn
Patience Jane Gardener
Rita Gorman
Michael Hooton
Dorothy Share
Mary R. Soo Hoo

In-Kind

Artist Operation LLC
Berklee College of Music
The Best Bees Company
Boston Bottle
Boston University (v)
CarlitosWave DJ Services
The Castle Group
The Chiofaro Company
The Dagny Boston
Eastern Landscaping
Goulston & Storrs, Pc.
Landscapes Express, Inc.
Harborside Inn, Cafe & Lounge
Husky Moving LLC
JetBlue
Massachusetts Convention

Center Authority
Mass DOT
MAX Ultimate Food
PEAK Event Services
Shane Signs LLC
Tufts University
Vaz & Mac Tex-Mex
Volo Sports
Wasted* PBC
WBUR
Yotel Boston

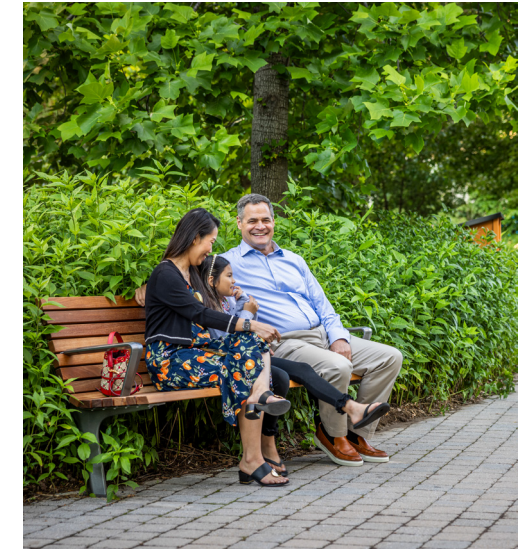
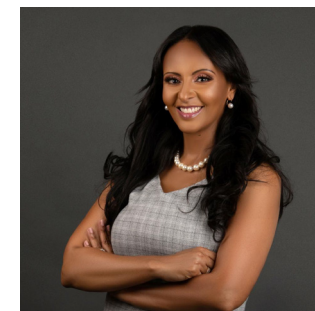


Photo Credits:
Chris Rucinski, Mel Taing

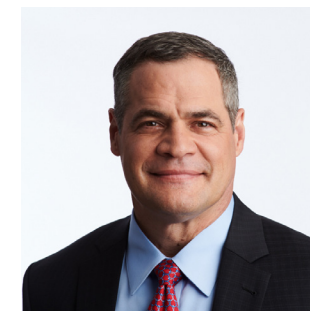
The Greenway Legacy Society

The Greenway Legacy Society recognizes those who play a lasting role in securing the Rose Kennedy Greenway Conservancy's future beyond their lifetime by making a bequest or other planned gift as part of their estate plan. We are indebted to the following Legacy Society members for their thoughtful generosity and stewardship.

Robert and Doris Gordon
Marlene S. Kaplan
Rebecca A. Lee
Janet Veasey and Robert Binney
Anonymous (3)



Hilina Ajakaiye
*Chair of the
Conservancy Board*



John Shea
*Vice Chair of the
Conservancy Board*

Board of Directors

- Michael Bonetti
- Mike Carragher
- Matt Conti
- Jennifer Fang
- Conor Finley
- Rosalind Gorin
- Carmine Guarino
- Jenny Harding
- Conan Harris
- Kirsten Hoffman
- Jessica Hughes
- Midori Morikawa
- Thomas O'Brien
- Linda See
- Bradley Snyder

**As of December 31, 2024*



Deniz Johnson
*Treasurer of the
Conservancy Board*



Rebecca A. Lee
*Clerk of the
Conservancy Board*



2024 Gala on The Greenway and Glow in the Park

*Photo Credits:
Pierce Harmon, Lee-Daniel Tran*



Financials

A solid revenue year provided funding that allowed for additional programming park-wide in 2024. Generous support from our foundation partners, corporate sponsors, and individual donors paved the way for expanded public art and over four hundred free programmatic activations which encouraged community engagement throughout The Greenway in 2024.

Overall, operating revenue increased to \$8.2M in 2024 from \$7.2M in 2023, a 10% increase. Earned revenue, driven by revenue from the beer gardens, carousel and promotional fees increased to \$1.1M, a jump of 16% from the prior year. Favorable weather and increased activity in the park positively impacted earned revenue in 2024. The Greenway is incredibly appreciative of the philanthropic support it received in 2024 which was its highest ever. Multi-year gift commitments in 2024 to support public art on The Greenway will ensure a vibrant park in the years to come.

In the second year of a five year funding agreement which extends through FY28, The Greenway received: \$1.7M from the The Greenway Business Improvement District, \$1.8M (including in-kind) from the Massachusetts Department of Transportation and \$300K from the City of Boston, all to fund maintenance, horticulture, and capital repairs throughout the park.

Core costs in 2024 remained relatively stable compared to 2023 with minor payroll-related increases reflecting a full year of new hires and fewer staffing vacancies in 2024. Growth in direct costs were funded and covered programs and helped offset increases in public art spending, and our continuing work with the Chinatown community.

In keeping with our investment policy, The Greenway drew from the endowment at a Board-approved 4.5% sustainable rate to fund current operations. 2024 marked the second full year with our newly adopted investment managers, which when combined with favorable market conditions, resulted in gains in our net assets compared to 2023.

| Operating Revenue and Support | FY24 | FY23 |
|---|----------------------|----------------------|
| Earned Revenue | \$ 1,082,404 | \$ 931,041 |
| Contributions, BID | \$ 1,524,412 | \$ 1,343,598 |
| Contributed income | \$ 2,080,030 | \$ 1,764,393 |
| Endowment draw for current operations | \$ 791,482 | \$ 792,521 |
| Government support, MassDOT | \$ 956,990 | \$ 800,000 |
| Gala & event revenue, net | \$ 520,295 | \$ 563,020 |
| Government support, City of Boston | \$ 295,736 | \$ 284,675 |
| Government support, grants | \$ 249,518 | \$ 176,044 |
| In-kind revenue, private | \$ 238,941 | \$ 126,178 |
| In-kind revenue, public | \$ 355,076 | \$ 272,874 |
| Other income and recoveries | \$ 72,313 | \$ 183,264 |
| Total operating revenue and support | \$ 8,167,203 | \$ 7,237,608 |
| Operating Expenses before Depreciation | | |
| Programmatic | \$ 6,007,960 | \$ 5,560,766 |
| Fundraising | \$ 920,499 | \$ 761,095 |
| Administrative | \$ 908,560 | \$ 707,994 |
| Total operating expenses before depreciation | \$ 7,837,020 | \$ 7,029,855 |
| Depreciation | \$ 847,396 | \$ 774,325 |
| Non-Operating Revenue and Support | | |
| Contributions, BID - Enhancements | \$ 175,587 | \$ 306,402 |
| Government support, MassDOT - capital | \$ 532,881 | \$ 578,888 |
| Contributions and grants - capital | \$ 90,000 | \$ 127,500 |
| Government support, grants - capital | \$ - | \$ - |
| In-kind revenue - capital | \$ - | \$ - |
| Investment income, net of fees | \$ 1,948,907 | \$ 2,435,318 |
| Gain/loss on fixed assets | \$ - | \$ - |
| Endowment pledge | \$ - | \$ - |
| Endowment draw for current operations | \$ (791,482) | \$ (792,521) |
| Total non-operating revenue and support | \$ 1,955,892 | \$ 2,655,587 |
| Change in net assets | \$ 1,438,679 | \$ 2,089,016 |
| Net assets, beginning of the year | \$ 29,835,051 | \$ 27,746,035 |
| Net assets, end of the year | \$ 31,273,730 | \$ 29,835,051 |

